

Sizes	14	16	36	38	40	42	Ins.
Bust measurement	32	34	36	38	40	42	Ins.
Hip measurement	35	37	39	41	43	45	Ins.
For Fig. 1—36"-39" Material	4¹/₄	4¹/₄	4¹/₂	4¹/₂	4³/₄	4³/₄	Yds.
For Fig. 2—36"-39" Material	4¹/₂	4¹/₂	4¹/₂	4³/₄	4³/₄	4³/₄	Yds.
For Fig. 3—36"-39" Material	4¹/₄	4¹/₄	4¹/₂	4¹/₂	4³/₄	4³/₄	Yds.
If desired contrasting Fig. 1-2							
36"-39" Material	3/4 yd. for all sizes. Deduct from original 3/8 yd.						
If desired Lace for Fig. 3 36"	Material..... 3/8 yd. for all sizes.						

This pattern fits size 16.

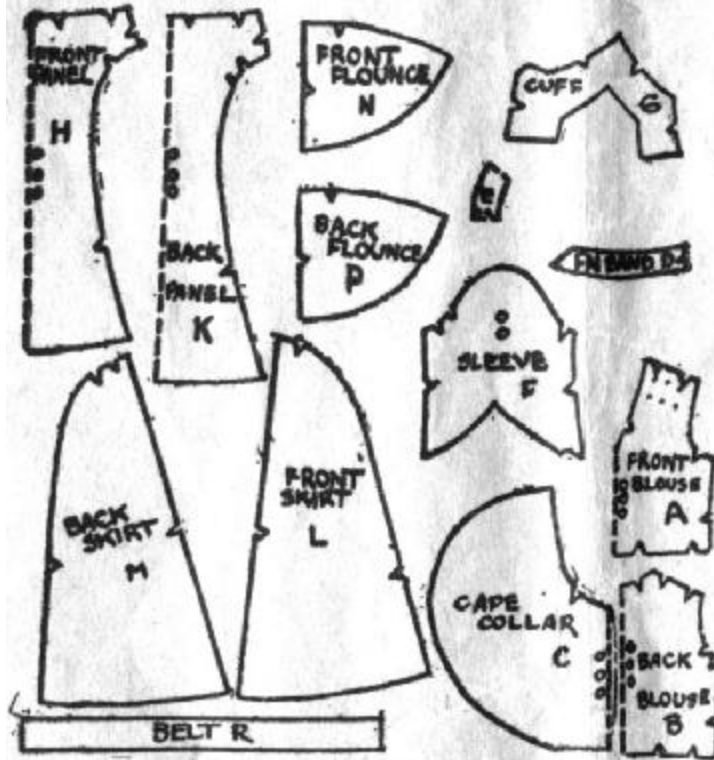
© EvaDress, 2009

This is a tea gown of charmingly graceful lines. Style I is a gown with dignified lines for the semi-formal occasion.

Style II gains in youthfulness by the variance of the neckline treatment and, the presence of the fashionable peplum.

Style III is transformed into a smart afternoon mode by the addition of interesting sleeves and a harmonizing collar.

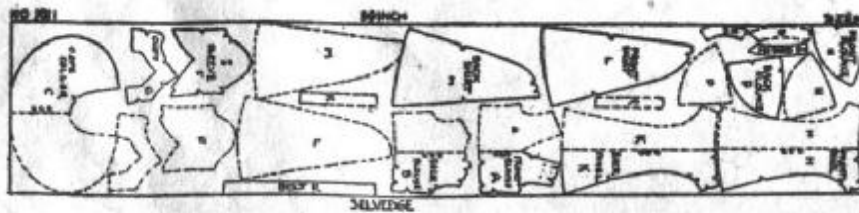
14 Pieces Half Pattern Given



To Make Style 1:-Omit following parts:-Front-flounce N Back flounce P Sleeve F and Cuff G

14 Pieces Half Pattern Given

- | | |
|-------------------|---------------------|
| A Front Blouse | H Front Skirt Panel |
| B Back Blouse | K Back Skirt Panel |
| C Cape Collar | L Front Skirt |
| D Front Neck Band | M Back Skirt |
| E Back Neck Band | N Front Flounce |
| F Sleeve | P Back Flounce |
| G Cuff | R Belt |



MARKS USED: < > JOINING OF SEAMS
 OO STRAIGHT OF GOODS OOO FOLD OF GOODS
 O OTHER DIRECTIONS