

STANDARD BODY MEASUREMENTS

Sizes	34	36	38	40	42	44	46	48	50	
Bust	34	36	38	40	42	44	46	48	50	Ins.
Waist	28	30	32	34	36	38	40	42	44	Ins.
Hip	37	39	41	43	45	47½	50	53	56	Ins.
Finished Back Length from Base of Neck to Hem of:										
Short Dress	43	44	44½	45	45½	46	46½	46¾	47	Ins.
Finished Length from Hollow of Neck to Hem in Front of:										
Long Dress	57	57½	57¾	58	58½	59	59½	60	60½	Ins.
Width Around Lower Edge of:										
Short Dress	68½	71¼	73¾	76	78¾	81½	84¼	87	89½	Ins.
Long Dress	91	95	98	100	102¾	105½	108½	111½	114½	Ins.

2" TURN UP FOR HEM ON SHORT DRESS, ½" TURN UP FOR HEM ON LONG DRESS

MATERIAL REQUIRED — WITHOUT NAP OR UP OR DOWN DESIGN

NOTE:— Additional material is required when: — not pre-shrunk — matching stripes — for extra seam allowance when material ravel.
If this garment is shortened 2", it will require ¼ yard less fabric than yardage given for every size.

SIZES	34	36	38	40	42	44	46	48	50	
STYLE I — SHORT DRESS WITH THREE-QUARTER SLEEVES										
39" material	3½	3½	3¼	3¾	3½	3¾	3¾	4	4½	Yds.
STYLE II—LONG DRESS WITH SHORT SLEEVES										
35" material	4¾	5	5½	5¾	5¾	5¾	6½	6¼	6¾	Yds.
39" material	4½	4¾	4¾	4¾	4¾	5½	5¾	5¾	6	Yds.
STYLE III—SHORT DRESS WITH SHORT SLEEVES										
35" material	3½	3¼	3¾	3¾	3¾	3¾	4	4¾	4¾	Yds.
39" material	2¾	2¾	2¾	3½	3¼	3½	3½	3¾	3¾	Yds.
CONTRASTING COLLAR										
35" or 39" material	⅝	⅝	⅝	⅝	⅝	¾	¾	¾	¾	Yd.

STYLE I, II OR III

NON-SEPARABLE SLIDE FASTENER (OPTIONAL)—9" or 10" for side opening.

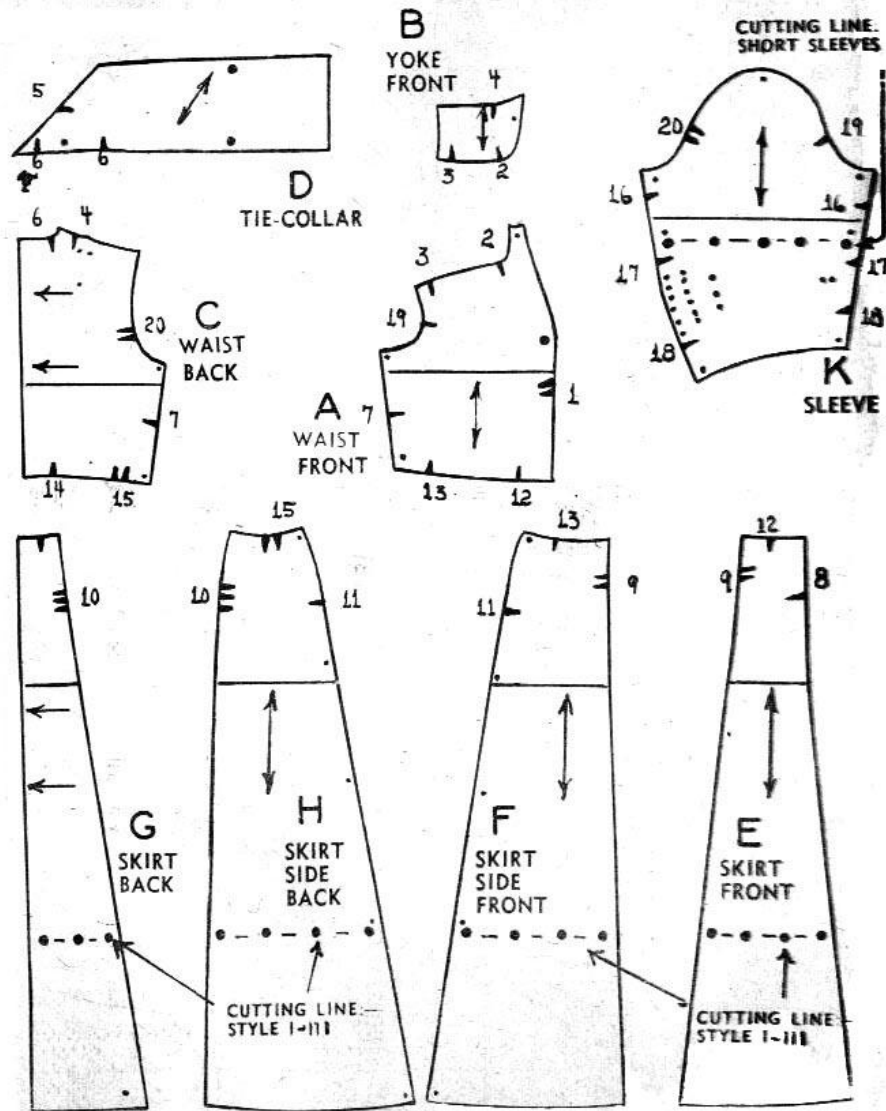
TRIANGLE SHAPE SHOULDER PADS—¼ yard of 35" muslin or purchase pads.

SEWING NOTIONS

STYLE I-II-III—Slide fastener OR snap fasteners, hooks and eyes; prong-type buckle; triangular shoulder pads (optional); pins or clips; matching thread 200 yds. **STYLE I-III**—Seam binding.

This pattern fits size 20.

© EvaDress, 2009



9-Pieces are given. Lay pattern pieces on the fabric precisely as indicated in the selected layout.